

Saramonic

Single-Ear Wireless Headset (Master)

单耳无线耳机（主机）

WiTalk SMH

User Manual
用户手册



Statement

Please read this manual carefully before using and strictly operate and store it in accordance with the instructions. Please save the manual for your future reference. If you need further assistance than the user manual, please consult your retailer for help or email us: info@saramonic.com

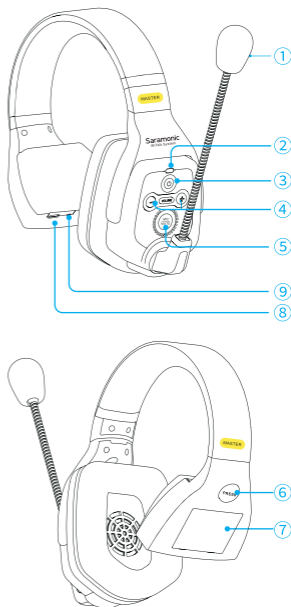
Introduction

WiTalk SMH is a single-ear Master headset for the Saramonic WiTalk WT5D full-duplex wireless intercom headset system which offers two-way communication at a range of up to 400m. It can work with four WiTalk SRH Remote headsets simultaneously, allowing up to 5 people to communicate at the same time. Thanks to its hands-free design, the WiTalk SMH is ideal for applications where teams need full use of their hands, such as filmmaking, sports events, production crew communication, etc.

Packing List

Single-Ear Master Headset × 1
USB-C Charging Cable × 1
Rechargeable Battery × 1
Carrying Pouch × 1

Product Structure

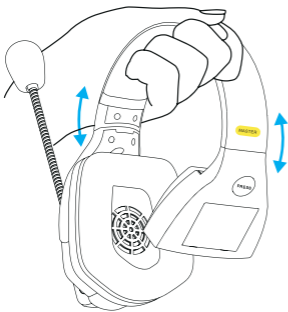


- ① Microphone
- ② Status indicator
- ③ Power button
- ④ Volume control (+/-) button
- ⑤ MIC/MUTE button
- ⑥ Release button
- ⑦ Battery compartment
- ⑧ USB-C charging port
- ⑨ Charging indicator

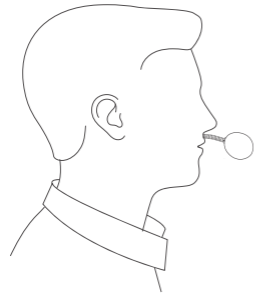
Operation Guide

How to Wear

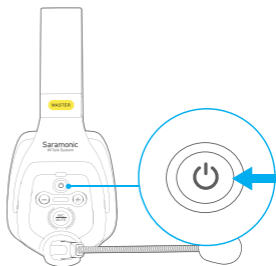
1. Put on the headset and adjust to a comfortable size and position.



2. Adjust the boom and position the microphone capsule at about 2cm in front of your mouth for optimum audio.



Power ON/OFF

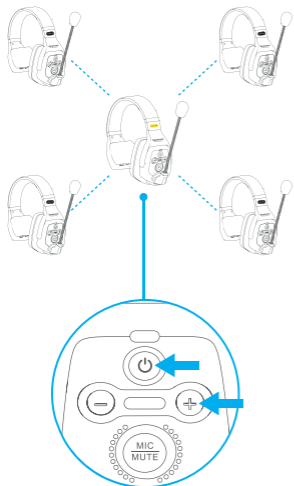


Press and hold the power button to turn on/off the Master headset.

Pairing

1. Make sure that both the Master and the Remote are in a shutdown state, then press and hold the "+" button and the power button of the Master headset simultaneously until the indicator flashes blue rapidly. Then, press and hold the "+" button and the power button of the Remote headset simultaneously to enter pairing mode.

Note: Each Master headset can have a maximum of 4 Remote headsets paired.



Press and hold simultaneously

2. When indicators of Remote headsets turn slow flashing in blue light, press the power button of Master headset, the Master and the Remote headsets will be successfully paired within 10s, and all the indicators will turn solid blue.

Mode	Status Indicator
Unpaired	Slowly flashing blue light
Pairing	Quickly flashing blue light
Paired Successfully	Solid blue light

Note:

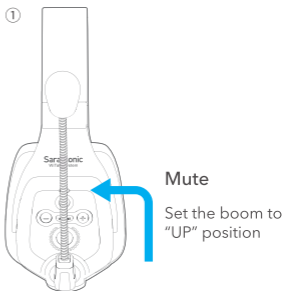
1. When successfully paired with four Remote headsets, the indicator of Master headset will flash red, blue and purple, indicating that the maximum number of pairings has been reached.

2. After successfully paired with four Remote headsets, the Master headset cannot enter pairing mode by pressing power button and "+" button simultaneously. The indicator will blink red light. If you want to re-enable pairing mode, please clear the Master headset first.

Mute Function

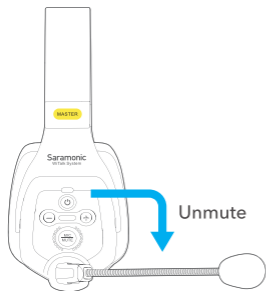
Boom can swivel over the top 270 degrees. Thus, headset can be worn on both sides.

You can mute/unmute the microphone in the following two ways:



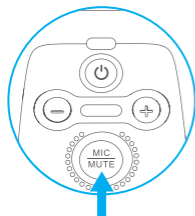
Mute

Set the boom to "UP" position



- ② Press the MIC/MUTE button to mute/unmute the microphone.

Mode	Status Indicator
Mute ON	Flashing red light
Mute OFF	Solid blue light



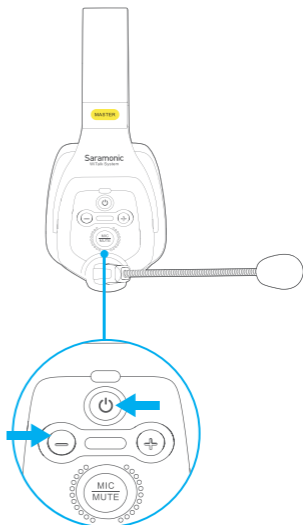
Volume Control

Press the "-" button to decrease headphone volume.
Press the "+" button to increase headphone volume.

Clearing the Master Headset

When pairing with a repaired or replaced unit, the Master headset needs to be cleared before a Remote headset can be paired. Follow the steps below to clear the Master headset:

1. Make sure the Master headset is powered OFF.
2. Press and hold the power button and the "-" button for 10 seconds until indicator flashes red and blue alternately. When the indicator turns off, the Master headset is cleared.



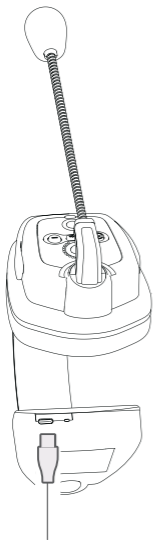
Battery Charging

Please recharge the device when battery is low.

Mode	Status Indicator
Low Battery	Solid red light

Charge the battery via a USB-C charging cable:

Mode	Charging Indicator (Headset)
Charging	Solid red light
Fully Charged	Solid blue light



Specifications

Duplex mode	Full-Duplex (FDX)
Modulation	GFSK
Carrier frequencies	1787MHz-1928MHz
Microphone type	Condenser microphone
Operating range	Up to 1312ft (400m) without obstacles
Frequency response	300Hz-5kHz
RF output power	<24dBm
Power consumption	<0.5W
SNR	65dB and more
Distortion	<1%
Power requirements	Li-ion Battery 3.7V/1200mAh or USB-C DC 5V
Battery life	Approx. 10 hours (with 2 Remotes), 5 hours (with 4 Remotes)
Weight	Approx. 360g (12.7oz)
Dimensions	175.1x203.1x85.8mm
Operating temperature	-10°C to 50°C
Storage temperature	-20°C to +55°C



For better recording experience, the application **SmartRecorder** is recommended.

为获得更好的录制体验，推荐使用枫笛 Saramonic 自主研发应用软件 **SmartRecorder**。



Scan the QR code and follow us!
扫描微信关注枫笛公众号!

Shenzhen Jiayz Photo Industrial., Ltd
深圳市长丰影像器材有限公司

A16 Building, Intelligent Terminal Industrial Park of Silicon Valley
Power, Guanlan, Longhua District, Shenzhen, China
深圳市龙华区观澜街道大富工业区硅谷动力智能终端产业园A16栋